

- 10 light barrier sections for detecting small objects
- Range 500 m
- Barrier height 75 mm
- PNP normally closed / normally open
- Alarm output
- alignment aid



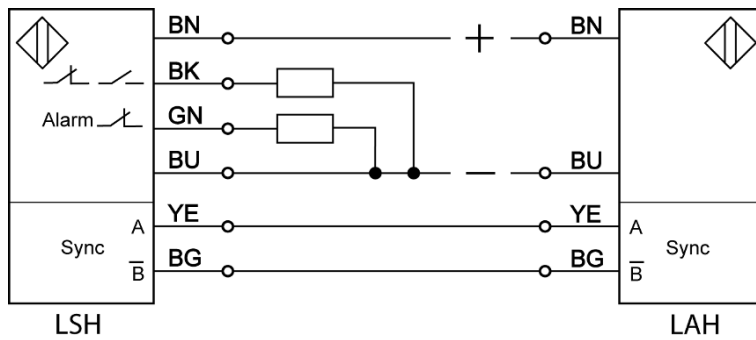
Product Characteristics

Type transmitter	LAH 050.1
Connection	Art.-No.
3 m cable	5007A
Type receiver	LSH 050.18
Connection	Art.-No.
1,5 m cable	5008A
Application	Area monitoring of 75 mm for cold and hot objects >15 mm

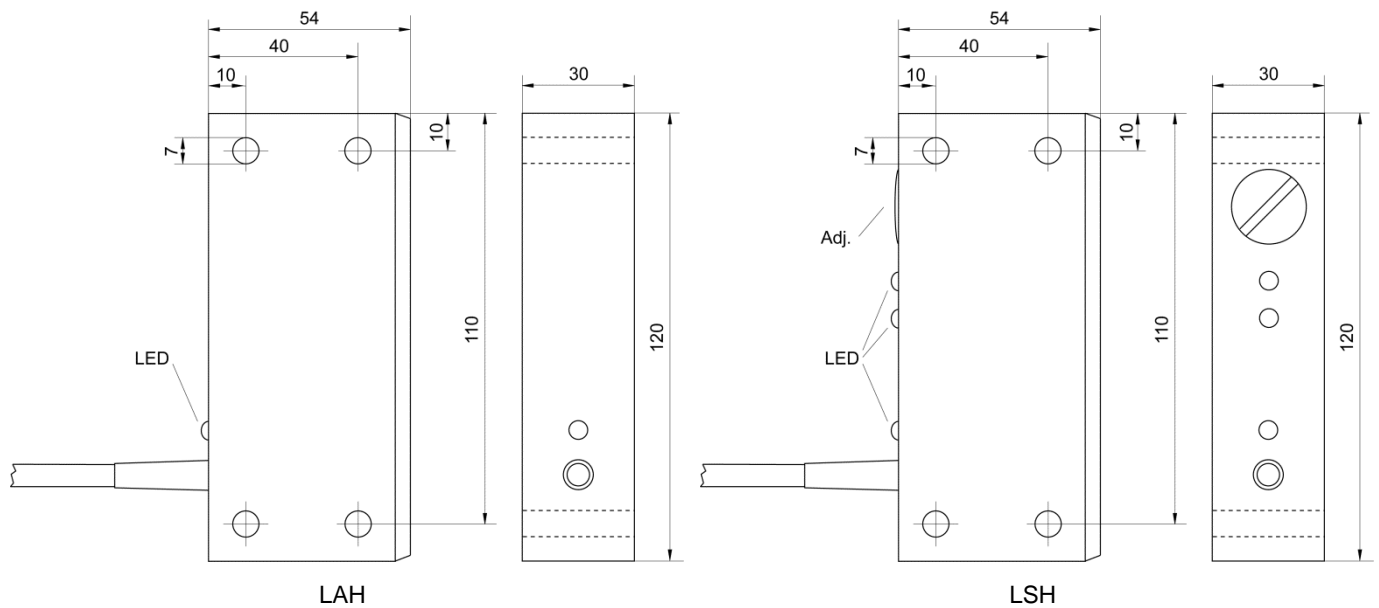
Technical Data

Range max.	600 mm
Operation range	20 ... 500 mm
Barrier high	75 mm
Number of paths	10
Operating mode 0	object detection with one interrupted path
Minimum object size operating mode 0	Ø 15 mm
Operating mode 1	object detection with two interrupted paths lying next to each other
Minimum object size operating mode 1	Ø 30 mm
Supply voltage	24 V DC (20 – 28 V DC)
Ripple	max. 15 %
Output (BK) object detection	PNP normally open / normally closed (programmable)
Output (GN) Alarm (with operating mode 1)	PNP normally closed (opens after a path has been interrupted >10 seconds)
Continuous current	0 - 400 mA
Short-circuit protection	yes, pulsing
Current consumption	transmitter approx. 100 mA, receiver approx. 30 mA
Voltage drop	< 2 V
Measuring frequency	10 ... 400 Hz, adjustable
Switch-on and switch-off delay	1.5 - 2 ms (measuring frequency 400 Hz) to approx. 22 ms (measuring frequency 10 Hz)
Ambient temperature	-25 ... +70 °C
Protection class	IP 67
Housing material	aluminum
Functional display	LED

Connection



Dimension (mm)



Accessories (in scope of supply)

Type	Art.-No.
-	-

Accessories (not in scope of supply)

Type	Art.-No.
-r	-

Further information

Document
Operating manual
005L