

- 10 light barrier beams for detecting small objects
- Range 10000 mm
- Barrier high 75 mm
- PNP normally closed / normally open
- Alarm output
- alignment aid



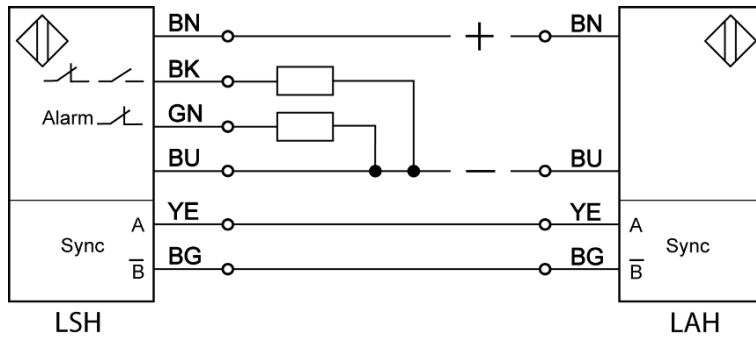
### Product Characteristics

<b>Type transmitter</b>	<b>LAH 1000.1</b>
<b>Connection</b>	<b>Art.-No.</b>
5 m cable	5007H
<b>Type receiver</b>	<b>LSH 1000.18</b>
<b>Connection</b>	<b>Art.-No.</b>
5 m cable	5008H
Application	Area monitoring of 75 mm for cold and hot objects >15 mm

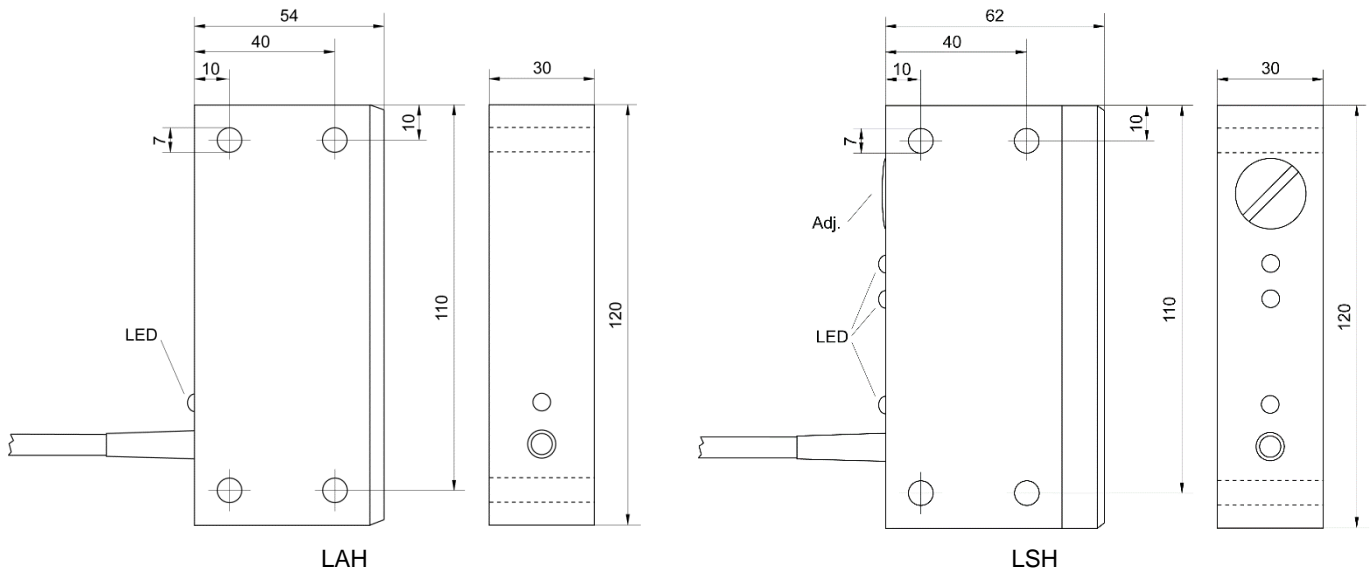
### Technical Data

Range max.	12000 mm
Operation range	1000 ... 10000 mm
Barrier high	75 mm
Number of paths	10
Operating mode 1	object detection with one interrupted path
Minimum object size operating mode 1	Ø 15 mm (20 Ø mm with barrier width <500 mm)
Operating mode 0	object detection with two interrupted paths lying next to each other
Minimum object size operating mode 0	Ø 30 mm (40 Ø mm with barrier width <500 mm)
Supply voltage	24 V DC (20 – 28 V DC)
Ripple	max. 15 %
Output (BK) object detection	PNP normally open / normally closed (programmable)
Output (GN) Alarm (with operating mode 0)	PNP normally closed (opens after a path has been interrupted >10 seconds)
Continuous current	0 - 400 mA
Short-circuit protection	yes, pulsing
Current consumption	transmitter approx. 100 mA, receiver approx. 30 mA
Voltage drop	< 2 V
Measuring frequency	10 ... 400 Hz, adjustable
Switch-on and switch-off delay	1.5 - 2 ms (measuring frequency 400 Hz) to approx. 22 ms (measuring frequency 10 Hz)
Ambient temperature	-25 ... +70 °C
Protection class	IP 67
Housing material	aluminum
Functional display	LED

## Connection



## Dimension (mm)



## Accessories (in scope of supply)

	Type	Art.-No.
-	-	-

## Accessories (not in scope of supply)

	Type	Art.-No.
-r	-	-

## Further information

	Document
Operating manual	005L