

- Plastic housing Ø 34 mm
- Rated operating distance (S_n) 30 mm
- ProxiPlus technology for higher operating distance
- Optimal detection of small objects
- PNP normally open + normally closed
- Plug S4 (M12x1 A)



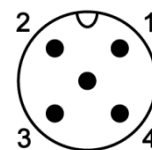
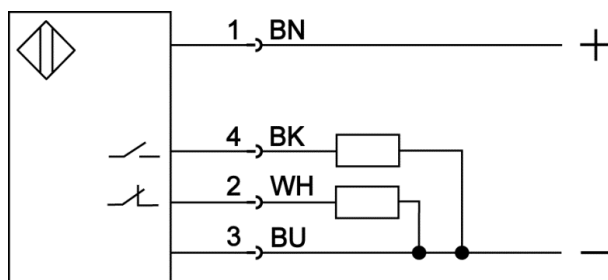
Product Characteristics

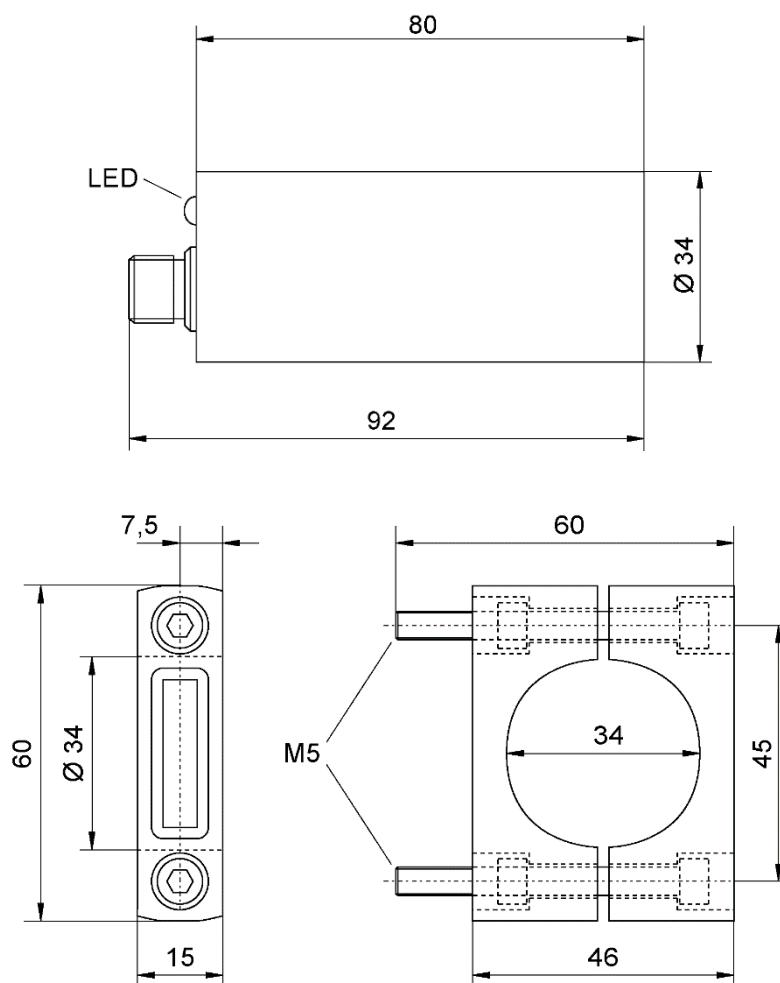
Type	IPH 035.38 G S4
Connection	Art.-No.
Plug S4 (M12x1 A)	2501A
Application	Non-contact detection of metallic objects

Technical Data

Rated operating distance (S_n)	35 mm
Target steel St37, 1 mm thick	105 x 105 mm
Operating distance adjustable	yes
Switching hysteresis (H)	1 - 15 %
Location at metal	non flush
Supply voltage (U_B)	10 - 55 V DC
Ripple voltage	max. 15 %
Output	PNP normally open + normally closed
Continuous current	0 - 400 mA
Short-circuit protection	yes, pulsing
No-load current (I_0)	< 10 mA
Voltage drop (U_d)	< 2 V
Operating frequency (f)	100 Hz
Ambient temperature	-25 ... +70 °C
Protection class	IP 67
Housing material	plastic
Functional display	LED

Connection



Dimension (mm)

Accessories (in scope of supply)

	Type	Art.-No.
Mounting clamp	HH 1	9823A

Accessories (not in scope of supply)

	Type	Art.-No.
Female plug S4 (M12 x 1 A), straight, can be assembled, 4 wire	ST040G	9842D
Female plug S4 (M12 x 1 A), angular, can be assembled, 4 wire	ST040	9841A
Connection cable 2 m, 4 wire, with straight female plug S4 (M12 x 1 A)	ST043/4-2	9851I
Connection cable 5 m, 4 wire, with straight female plug S4 (M12 x 1 A)	ST043/4-5	9841T
Connection cable 10 m, 4 wire, with straight female plug S4 (M12 x 1 A)	ST043/4-10	9850J
Connection cable 2 m, 4 wire, with angular female plug S4 (M12 x 1 A)	ST041/4-2	9841D
Connection cable 5 m, 4 wire, with angular female plug S4 (M12 x 1 A)	ST041/4-5	9841E
Connection cable 10 m, 4 wire, with angular female plug S4 (M12 x 1 A)	ST041/4-10	9841S

Further information

	Document
Operating manual	BDA_IK_D_E